

# Angular Contact Ball Bearings

Bearing No. : **NACHI 7309C**

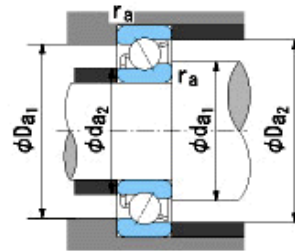
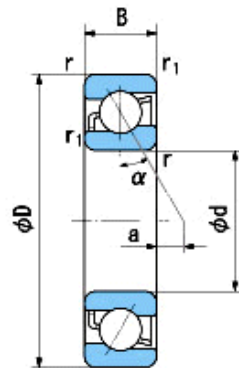
■ Bearing Type

■ Clearance

■ Tolerance Class

### Dimensions

d = 45<sup>0</sup><sub>-0.012</sub>  
 D = 100<sup>0</sup><sub>-0.015</sub>  
 B = 25<sup>0</sup><sub>-0.120</sub>  
 r = 1.5~2.3  
 (Radial Direction)  
 r = 1.5~4  
 (Axial Direction)  
 r1 = 1~1.5  
 (Radial Direction)  
 r1 = 1~3  
 (Axial Direction)  
 a = -4.1



### Dimensions

da1(min) = 54  
 da2(min) = 54  
 Da1(max) = 91  
 Da2(max) = 94.6  
 ra(max) = 1.5  
 ra1(max) = 1  
 Mass = 0.875 kg

Basic Dynamic Load Rating Cr : **63,500** N

Basic Static Load Rating Cor : **43,500** N

Limiting Speed ;

Grease Lubrication : **11,000** min<sup>-1</sup>

Oil Lubrication : **15,000** min<sup>-1</sup>

	INNER RING	OUTER RING
O.D.Surface Runout with Side :		-
Axial Runout with Bore :	-	-
Axial Runout with Raceway :	-	-
Width Variation :	<b>0.020</b>	<b>0.020</b>
Radial Runout :	<b>0.015</b>	<b>0.035</b>